

# Riverton Primary School

Phone 03 2348663 Cell 027 759 4548 TEXT only  
Email [office@rivertonschoolnz.net](mailto:office@rivertonschoolnz.net)



*OUR VISION – THROUGH OUR CORE VALUES AND FOCUSED TEACHING AND LEARNING PROGRAMMES, WE ARE COMMITTED TO BE THE BEST WE CAN BE IN OUR LEARNING, ATTITUDE AND BEHAVIOUR*

Website [www.riverton.school.nz](http://www.riverton.school.nz)  
Bank Account No. 06 0954 0032230 00  
Kidspace Supervisor 027 2348663

Newsletter No.13 16 August 2023

Greetings, Haere Mai, Talofa, Namaste, Ni hao, Hoe gaat het, Kamusta.

All your positive feedback about this years' production, 'Around the World in 80 minutes', has been appreciated by the children and staff. We hope you all enjoyed the evening, as we did.

On Thursday evening we host the Zonal Speech Competition in our school hall at 6.00pm. I would like to wish our Yr 5/6 pupils all the best as they take on pupils from Takitimu & Thornbury.

Our next big event is Polyfest on Tuesday the 22nd of August. Our Senior Kapa Haka group will be performing at the ILT Stadium first up at 9.10am.

We have a few building projects in the pipeline and the ministry have approved all the plans and the finances. We hope to get these projects started by next term once the council have given us consent to start.

On Friday Rm 7 pupils will be lucky enough to have a visit from the Otago University, He Ao hou - New Future Muhiku with Dr David Warren. The children will participate in STEAM activities on the day and be involved in telling the story on a demonstration run through the hydrogen fuel cell kits.

Next week the board will be sending out a form for all families to fill out. We are consulting with you to help us develop our school charter to reflect your views so we can create the best learning environment for your child. We have spoken to the children about this and there are incentives for you as a family and the children at school.

## Kidspace Support

This will only be a position to help Josy out when needed or if she is away for any reason. It would be a casual position for someone who would like to help out at Kidspace when we need it. If you are interested in any way, please contact Tim Page at school.

**Aug 17** - Zonal Speechs @ RPS 6 pm, **Aug 21** - Cohort Entry, **Aug 22** - Kapa Haka Polyfest, **Aug 25** - Rm 8 Assembly, **Aug 28** - KSOM Show & Mrs Ultee on leave, FOS Mtg, **29 Aug** - Ski Trip, **31 Aug** - NW Speech finals; **Sept 1** - Spring/Daffodil Day - Gold Coin - Dress Bright, **Sept 5** - BOT Mtg, **Sept 7** - Junior Marae Visit, **Sept 8** - GATE Science Yr 4 - 6, Rm 1 Assembly, **Sept 14** - Senior Marae Visit, **Sept 18** - School Photos, Mr Cleaver on sick leave, Clean Up Week, **Sept 19** - Mini ball starts, **Sept 21** - School Disco 5.30 - 7pm, Bilingual Class Hui - 6pm; **Sept 22** - EOT & Leadership Assembly. **Oct 9** - Term 4 starts.

Haere ra  
Tim Page

'Happiness may well consist primarily of an attitude towards time.'

**Robert Grudin.**

# ASSEMBLY TIMETABLE

**Parents/extended families welcome**

**Friday 25<sup>th</sup> August @ 2.00pm Room 8**

**Friday 8<sup>th</sup> September @ 2.00pm Room 1**

**Friday 22<sup>nd</sup> September @ 2.00pm Leadership assembly Rm 9**

*All welcome*

## What's Happening

### August 2023

- ❖ 17<sup>th</sup> Aug Zonal Speeches 6pm @ RPS
- ❖ 21<sup>st</sup> Aug Cohort entry
- ❖ 22<sup>nd</sup> Aug Polyfest – Kapa Haka Group 9.10am
- ❖ 28<sup>th</sup> Aug KSOM Show
- ❖ 28<sup>th</sup> Aug Friends of the School Meeting
- ❖ 29<sup>th</sup> Aug Ski Trip – Remarkables
- ❖ 31<sup>st</sup> Aug NW Speech Finals

### September 2023

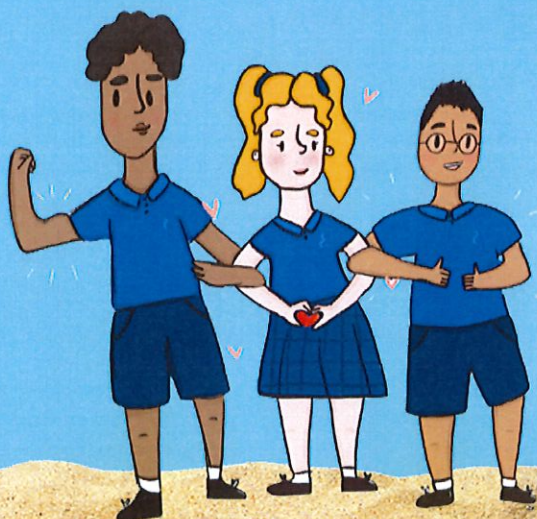
- ❖ 1<sup>st</sup> Sep Spring/Daffodil Day – dress bright, gold coin please
- ❖ 5<sup>th</sup> Sep Board Meeting
- ❖ 7<sup>th</sup> Sep Junior Marae visit Bluff
- ❖ 8<sup>th</sup> Sep GATE Science
- ❖ 14<sup>th</sup> Sep Senior Marae visit Bluff
- ❖ 18<sup>th</sup> Sep School Photos
- ❖ 18<sup>th</sup> Sep Clean up week
- ❖ 19<sup>th</sup> Sep Miniball starts

# CARE

Here are our latest SILVER medal recipients who have completed 10 CARE Cards. Well Done to you all!



Maggie Kells  
Lillian Hopcroft  
Laney Orr



At Riverton Primary School

 We CARE 

# CARE



Here are our latest BRONZE medal recipients who have completed 5 CARE Cards. Well Done to you all!

Louis Eade

Rosie Coburn

Cooper Menpes

Faith Peteru

Sadie Haywood

Harper Schmidt

Lucy Kelso

Nova Johnston

Connor McIvor

Brax Mason

Liz Menpes

Mharkus Escobia

Toby Sellars

Brody Wilson

Charlie Kennedy

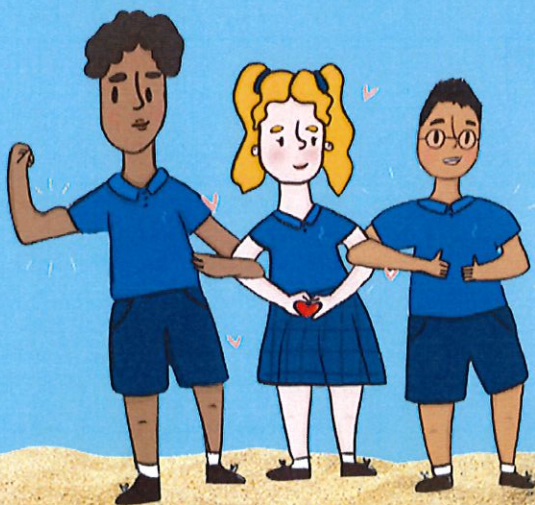
Dibya Aryal

Darren Marayo

Carter Sinclair

Reef Hodges

Beau Nicolson



At Riverton Primary School

 We CARE 

# CARE

## Certificate Recipients from the Week 4 Assembly

Room 1 - Elliott Mason & Jason Tamang

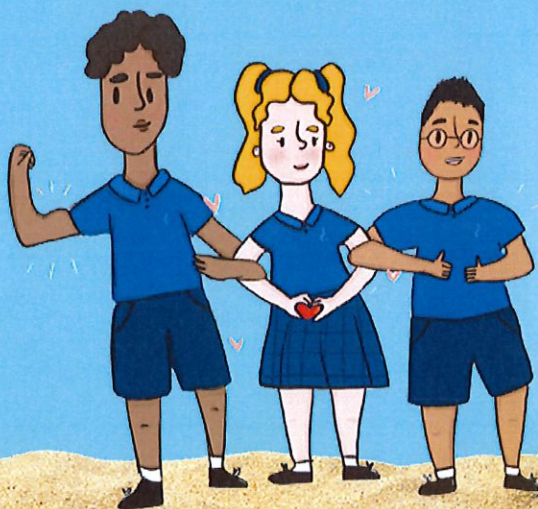
Room 3 - Brody Wilson & Connor McIvor

Room 5 - Storm Fallowfield & Rylan Young

Room 7 - Lucy Kelso & Anaru Halder

Room 8 - Harlan Bickley & Niwa Beri

Room 9 - Ted Shearing & Seth Armstrong



At Riverton Primary School

§ We CARE §

Dr. Seuss's  
**THE CAT**  
IN  
THE **HAT**



**LIVE ON STAGE IN THE SCHOOL HOLIDAYS!**

**September 29**  
**Invercargill**  
**Civic Theatre**



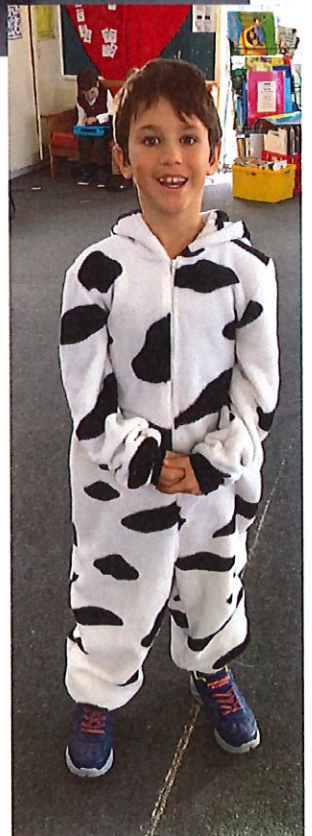
[www.ticketek.co.nz](http://www.ticketek.co.nz)

[www.catinthehatlive.com](http://www.catinthehatlive.com)

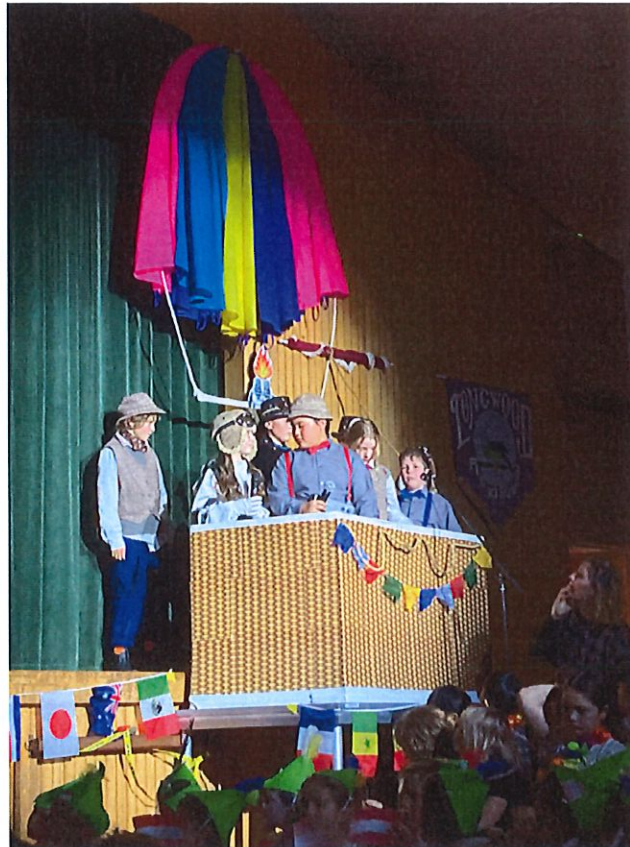
# Around the World in 80 Minutes

# Austria

## WITH ROOM 5



# AROUND THE WORLD IN 80 MINUTES





# Unichem

## UNICHEM RIVERTON PHARMACY

168 Palmerston Street

Riverton 9822

03 2348515

### Community Pharmacy Health Conditions Service

Unichem Riverton Pharmacy is excited to introduce the Minor Health Conditions Service to our community

This service is provided by selected community pharmacies to consult on a range of minor health conditions and supply funded medicines and treatment aids if clinically indicated. This initiative aims to improve access for people who are unable to access or afford care for these minor conditions.

We will provide a FREE comprehensive consultation by our friendly and experienced pharmacists, and we will also provide FREE treatments for approved conditions if indicated.

Who is eligible to receive this service?

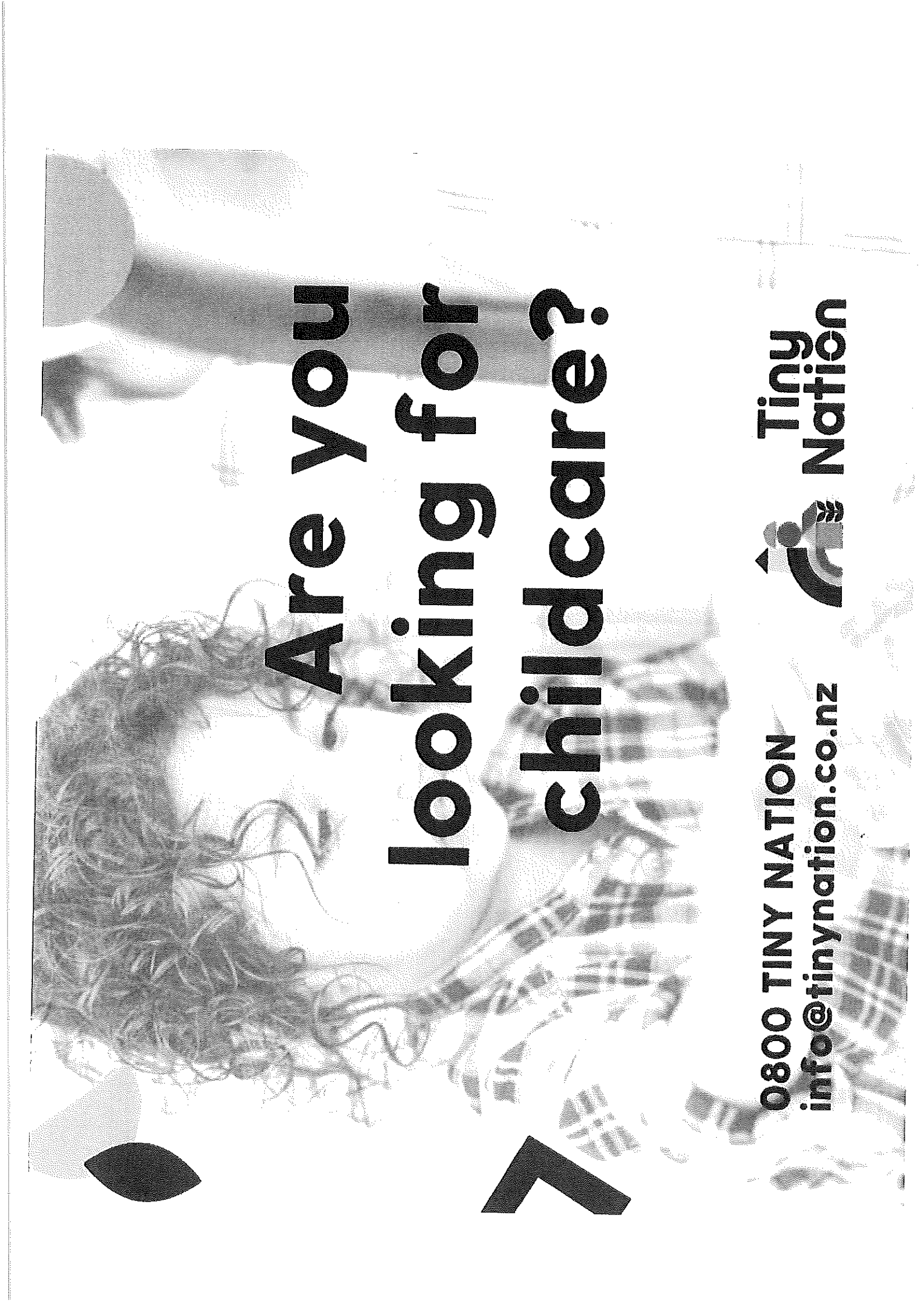
- Children under 14 years of age
- Whanau members (any age) of a child under 14 years of age, with the same symptoms
- A community service card holder
- Maori or Pacific Islanders

What conditions are covered under this service?

- Pain & fever
- Acute diarrhoea
- Dehydration
- Minor eye inflammation and infections including conjunctivitis (only eligible for over 2 years of age)
- Scabies
- Headlice
- Eczema/dermatitis
- Minor skin infections

Come in and chat with our experienced and friendly team at Unichem Riverton Pharmacy. If you cannot come in to the pharmacy then please call us as we can provide a phone consultation

**Lisa Beatson**



# Are you looking for childcare?

0800 TINY NATION  
[info@tinynation.co.nz](mailto:info@tinynation.co.nz)



## HARCOURTS GOLD SPITFIRE

# Art Competition

### THREE GROUPS:

- Years 1 - 4, Years 5 - 8 and Years 9 - 10
- PRIZES FOR EACH GROUP:**
- 1st Prize: one award, \$300 voucher
  - 2nd Prize: up to two awards, \$200 voucher each
  - 3rd Prize: up to three awards, \$100 voucher each
  - Highly commended: up to 10 awards

### SUBMISSION DEADLINE:

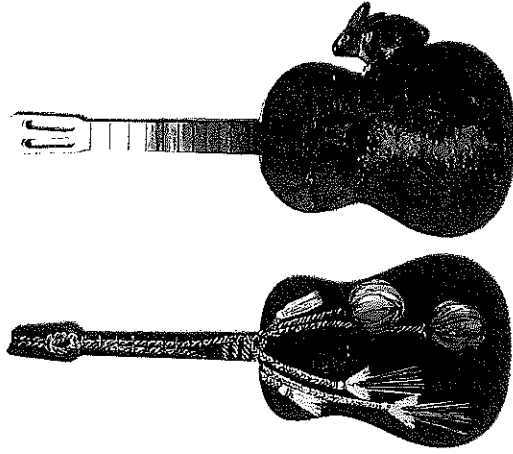
- 5 pm, 6th October 2023

For essential details, please scan the QR code below



Artwork to be sent to Harcourts Gold Spitfire Office  
Unit 12, 544 Memorial Avenue, Christchurch Airport,  
Christchurch 8053  
CONTACT: 03 662 9222

**Harcourts gold**



Janet de Wagt, *Waiake Pui*, 2023, oil on wood  
Janet de Wagt, *Let go to the Hop*, 2023, oil on wood

## JANET DE WAGT

### Songs of the Land

3 August - 3 September

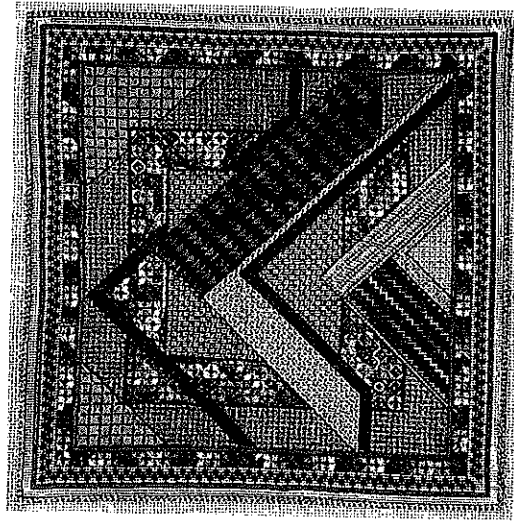
Based in Dunedin, Janet de Wagt has been working full-time as an artist for the past 40 years, balancing a successful painting career with a busy community-based role as an art project facilitator. 'Songs of the Land' combines Janet's love of the environment with her art. In this series Janet uses guitars and ukuleles as her canvas, utilising the inner spaces of the instrument to introduce a light source. The guitars and ukuleles are a metaphor for the sounds she hears in nature and the light illuminates the many environmental issues dear to her heart. On the surface they appear to be quirky and fun but look more closely and you will discover a deeper message.

## Eastern Southland Embroiderers' Guild

5 - 27 August

This popular biennial presentation of southern embroidery features both traditional and contemporary genres, developed over the past two years by members of the Eastern Southland Embroiderers' Guild. The exhibition showcases a wide variety of techniques and media from cross stitch and hardanger, through to stump work and crewel (wool).

Loma Critchley, *Mystery Stitchery Bag*, 2023.  
canvas work with various stitches



Eastern Southland Gallery, 14 Hokonui Drive, Gore  
03 208 9907 | [artgallery@goredc.govt.nz](mailto:artgallery@goredc.govt.nz) | [www.esgallery.co.nz](http://www.esgallery.co.nz)