

# Riverton Primary School

Phone 03 2348663 Cell 027 759 4548 TEXT only  
Email [office@rivertonschoolnz.net](mailto:office@rivertonschoolnz.net)



**OUR VISION – THROUGH OUR CORE VALUES AND FOCUSED TEACHING AND LEARNING PROGRAMMES, WE ARE COMMITTED TO BE THE BEST WE CAN BE IN OUR LEARNING, ATTITUDE AND BEHAVIOUR**

**Website [www.riverton.school.nz](http://www.riverton.school.nz)  
Bank Account No. 06 0954 0032230 00  
Kidspace Supervisor 027 2348663**

Newsletter No. 19 22 November 2023

Greetings, Haere Mai, Talofa, Namaste, Ni hao, Hoe gaat het, Kamusta

We would like to welcome the following children to Riverton Primary; Archer Brown, Isaac Mason, Hemi McKay, Leo McKay and Brix Callena.

Last Friday we had an exceptionally fun day with the teachers and some parents involved in the Agrikids morning and then the excitement of the Colour Run organised by our wonderful FOS team. I would like to thank the FOS for all their planning, the support of the fire brigade, and local police. It was great to see how a community can get together to make a difference to our children's lives and giving them experiences they will never forget.

Just a reminder that there is a Maori Hui on Thursday at 5.30 pm in the hall. It would be good to see as many families there to discuss what we are doing well at Riverton Primary and where to next for our children and school.

We have a few important dates coming up. Tough Kids for our Yr 3 - 6 pupils will be on next Wednesday, and this is such a fun event with adventure obstacles to climb over and slides to slip down. Buses will leave from school at 8.30 am.

On Friday the 8th December we would like to invite parents along to an afternoon tea at 2 pm. This is to show our appreciation for all your help and support during the year, as we could not offer our children all the opportunities we do without your help and support.

I would like to update you all on the building projects that are about to start here at school. The administration block will be out of service for Term 1 next year. The scaffolding will go up around the building in the last week of January 2024. The builders will be removing the current roof and replacing it with a pitched roof, adding a ramp to the front entrance and removing all the old red bricks from the building, then the new look bricks will be added.

While this project is being worked on the administration office and staffroom will be set up in Room 5 & 6 (Ms Uhlmann's class). This will mean that we would like the children to be dropped off at the back of the hall, as there will be no access to the school from the front on Leader Street. More information will be given to families by the end of the year.

Once the administration block is complete we will move to the junior classes.

## **Dates:**

**Nov 23 - Maori Consultation Hui - 5.30 pm; Nov 29 - Tough Kids for Yr 3 - 6 pupils;**

**Dec 1 - Rm 1 Assembly; Dec 8 - Thank you Afternoon tea for parents @ 2.00 pm, Reports go home; Dec 11 - Optional parent interviews; Dec 12 - BOT Mtg; Dec 13 - Yr 6 Dinner; Dec 14 - Fun Squirt Mania; Dec 15 - Leadership Assembly; Dec 18 - EOT Celebrations - 6.00 pm; Dec - 19 - End of year 12.00 pm; Dec 20 - TOD  
Jan 31 - 2024 School year starts.**

Haere ra Tim Page

'People often say that this or that has not yet found himself. But the self is not something that one finds. It is something that one creates.'

Thomas Szasz.

# ASSEMBLY TIMETABLE

**Parents/extended families welcome**

**Friday 1<sup>st</sup> December @ 2.00pm Room 1**

**Friday 15<sup>th</sup> December @ 2.00pm Leadership assembly Rm 9**

*All welcome*

## What's Happening

### November 2023

- ❖ 23<sup>rd</sup> Nov Maori Consultation Hui, 5.30pm
- ❖ 29<sup>th</sup> Nov Tough Kids for Yr 3-6 pupils

### December 2023

- ❖ 8<sup>th</sup> Dec Thank you afternoon tea for parents @ 2pm
- ❖ 8<sup>th</sup> Dec Reports go home
- ❖ 11<sup>th</sup> Dec Optional 3 way interviews 3.30pm-5.00pm
- ❖ 12<sup>th</sup> Dec Board Meeting
- ❖ 13<sup>th</sup> Dec Year 6 Dinner
- ❖ 14<sup>th</sup> Dec Fun Squirt Mania
- ❖ 18<sup>th</sup> Dec End of Year Celebrations 6pm
- ❖ 19<sup>th</sup> Dec Last Day of Term School finishes 12pm
- ❖ 20<sup>th</sup> Dec TOD

### January 2024

- ❖ 31<sup>st</sup> Jan Term One starts

**THANK YOU TO EVERYONE WHO PURCHASED BOOKS  
FROM OUR BOOK FAIR!**

**We got \$618 worth of free books for our library**

# CARE

## Certificate Recipients from the Week 6 Assembly

Room 1 - London Hollands &

Maddison King-Stewart

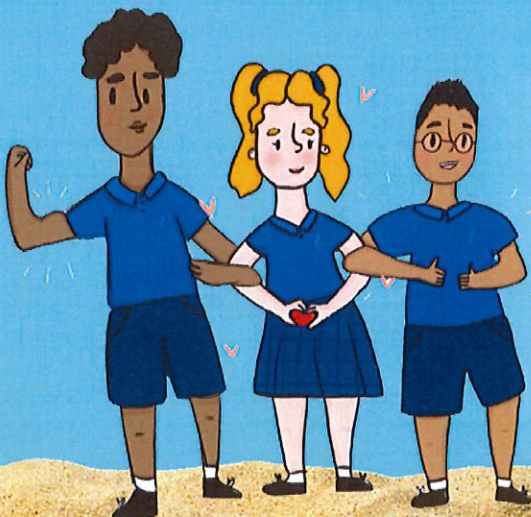
Room 3 - Jordan Young & Ana Heddershaw

Room 5 - Ubina Giri & Mharkus Escobia

Room 7 - Austin Hooper & Jonah Dillon-Pollard

Room 8 - Harlan Bickley & Mia Mennell

Room 9 - Ted Shearing & Louis Eade



At Riverton Primary School

 We CARE 

# CARE

Here are our latest SILVER medal recipients who have completed 10 CARE Cards. Well Done to you all!



Struan Grout

Harper Turner

Ava-Lily Hoban

Jackson Voss

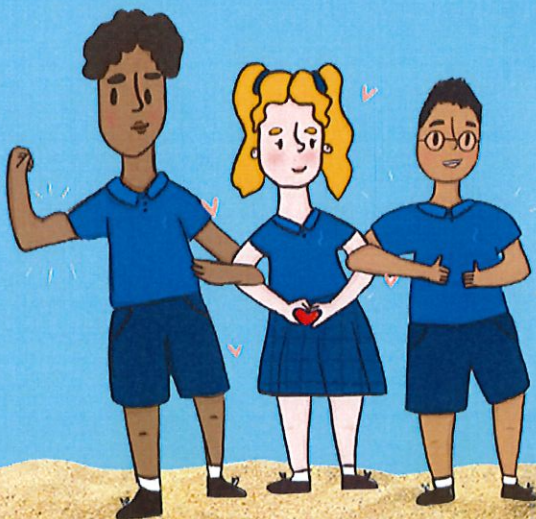
Lexi Bethune

Grace Brown

Mason Lonneker

Sadie Haywood

Brooklyn King-Stewart



At Riverton Primary School

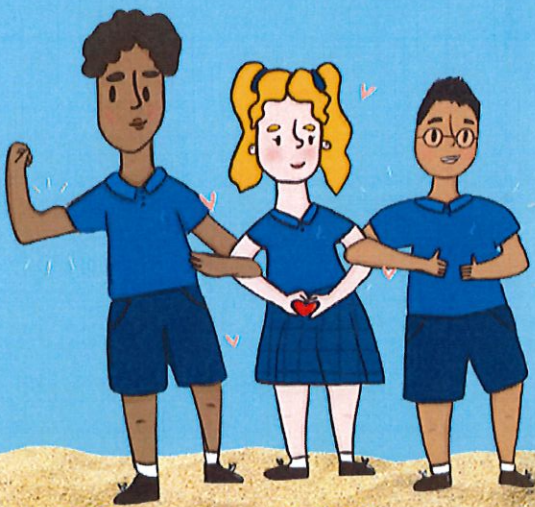
~ We CARE ~

# CARE

Here are our latest BRONZE medal recipients who have completed 5 CARE Cards. Well Done to you all!



Tanner Haywood  
Anaru Halder  
Anna Shearing



At Riverton Primary School

 We CARE 

# AGRIKIDS DAY

## TENTS



# AGRIKIDS DAY

## WHEELBARROW RACES





**BRENT SCAMMELL HONDA**



**BRENT SCAMMELL HONDA**  
presents the **HONDA**

# Kids Mini & Trail Demo Day

**BBQ & Refreshments,  
Spot Prizes  
ALL WELCOME**

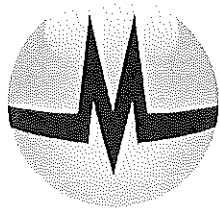
**We have a limited number  
of new bikes for  
Christmas so get in quick**

**Thursday  
23 Nov 2023,  
4-8pm**

**Venue:  
Rapid 2018,  
Dipton Winton Hwy,  
South of  
Centre Bush,  
Roskam property**

**Bring along your  
Protective Gear  
and Helmets to  
Demo New Models**





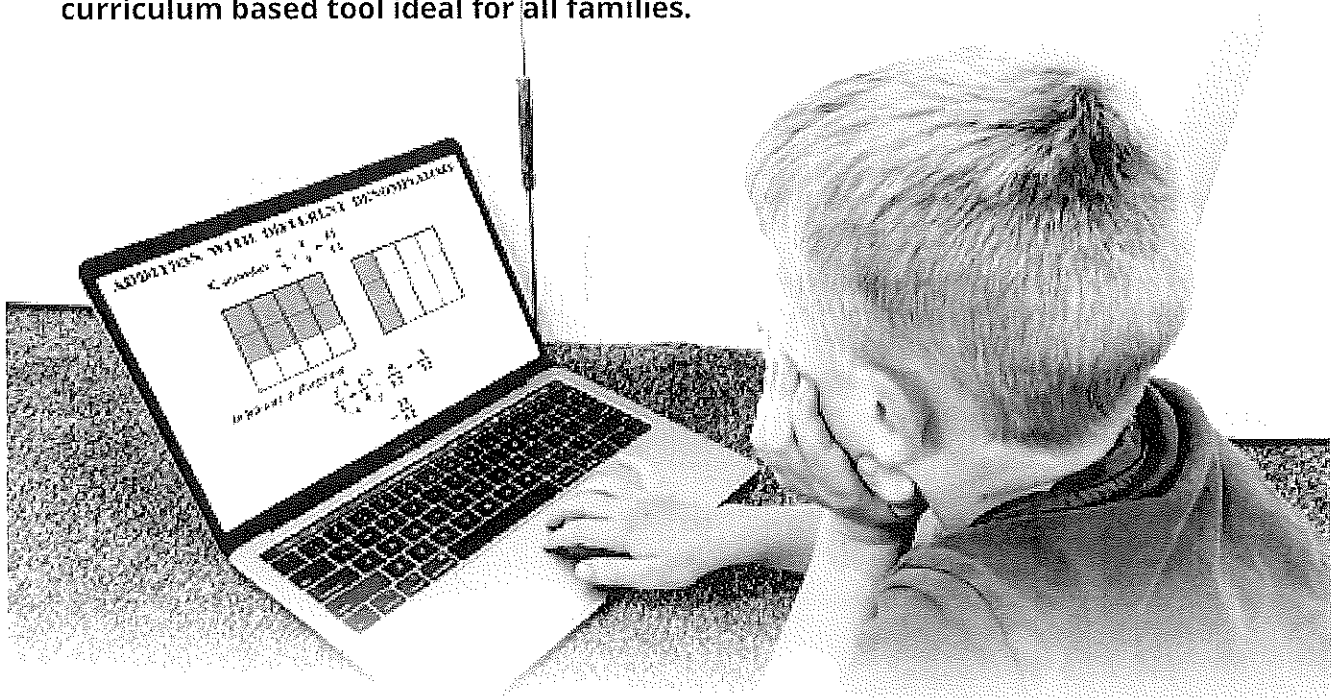
# MathsBuddy

YOUR ONLINE MATHS TUTOR

To speak to  
someone about  
MathsBuddy,  
call us at  
0800-299-182

**MathsBuddy** is the perfect online maths program for families. It consists of over 1,400 video tutorials and 50,000 interactive questions developed by experienced maths teacher, Pat Murray. MathsBuddy helps guide your children lesson by lesson allowing them to pause, rewind and repeat all or part of any video tutorial until they fully understand it.

**Covering Year 1 through to Year 13, MathsBuddy is a comprehensive, current curriculum based tool ideal for all families.**



### MathsBuddy features:

- ✓ Clear step-by-step video tutorials
- ✓ Interactive questions and worksheets to test understanding
- ✓ Printable one-page summaries with complete notes
- ✓ Worked solutions showing each step to the answer
- ✓ Automatic marking and progress reports to highlight areas needing support

**Over 290,000 children are already using MathsBuddy.**

Start your MathsBuddy FREE trial today at  
<https://mathsbuddy.co.nz/free-trial>



## Hospice Southland's biggest raffle ever!

Southland's summer just got brighter – Hospice Southland's Family Summer Holiday Raffle is here, and it's our biggest raffle to date with fantastic prizes worth over \$6000!

The prizes include a four-burner gas BBQ, a family-sized tent, a paddleboard, a trip to the Glow Worm caves, and so much more ☐☐

☐☐ Get your tickets at any Hospice shop or on our website. Keep an eye out for our volunteers at Mitre 10 Invercargill, FreshChoice Te Anau, Riverton Plaza and New World Supermarkets throughout Southland and Wakatipu. Let's make this summer unforgettable and meaningful! Let's make this summer unforgettable and meaningful!

Your \$5 ticket or a book of five for \$20 makes a real difference. It supports Hospice Southland's compassionate end-of-life care, available free of charge to our community

### General information

- The raffle starts on Monday, 6 November 2023.
- It closes on Friday, 19 January 2024.
- The winner will be announced on 3 February in the Southland Times and the Otago Daily Times.
- The prize is to be claimed by 19 April 2024, otherwise the raffle will be redrawn.

Online ticket link: <https://www.hospicesouthland.org.nz/pages/summer-holiday-raffle/>

(The above link will only be live from the 6<sup>th</sup> November)



**Make a life changing  
difference in your  
community**

**Your community needs you!**



**Hato Hone  
St John**

## **HATO HONE ST JOHN RIVERTON FIRST RESPONSE UNIT**

The community of Riverton really needs your help. Currently we have only 3 volunteers to help with our ambulance response locally.

We have just acquired a First Response Unit that is able to respond to emergencies in our community for the initial help and care of patients until a transporting crew from outside our area can arrive.

Hato Hone St John offers full training to enable First Responders to care for patients. We offer an internationally recognised First Responder Qualification with NZQA endorsement.

Do you have an employer that would be willing to allow you to respond to a pager for an hour or so or do you have a few hours in the evening or overnight that you could turn a pager on and respond if someone needed your help?

If you are interested in helping your Community and Hato Hone St John, please call Kat Andrew Group Operations Manager Southland West on 027 291 5462 or Volunteer Support Manager Sandra Wilson on 027 232 8479.

This could be a life changing decision for you as well as your community.

7th December 2023

# Connected Parenting Talk.

Invercargill, NZ



## Lael Stone

Examining some of the biggest challenges in raising children, we will explore; Dealing with big feelings, How to get kids to co-operate, Using play for healing, Exploring our own triggers, Alternatives to punishments and rewards and Opportunities to ask questions about your kids.

Lael Stone is an author, TEDx speaker, counsellor and parenting educator who specialises in navigating trauma and disconnection in families. She has spent the last 20 years working with families from babies up to teen years.

ILT Stadium  
Surrey Park Road  
Glengarry, Invercargill 9810

**7th December 2023**  
**7:00 pm – 9:00 pm**

She is a mother of three grown-up children and the co-founder of Woodline Primary School – a new innovative school focused on supporting emotional intelligence in children. Her latest book sits on many bestseller lists, and she currently speaks all over Australia on how to build more connections in families.

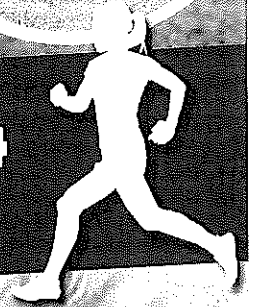
Tickets:	Single	Couple
	<b>A\$45.00</b>	<b>A\$80.00</b>

[laelstone.com.au/events](https://laelstone.com.au/events)

[laelstone.com.au](https://laelstone.com.au)

f @laelstone

# GLENHAM TRAINWRECK TRAIL



**SATURDAY 20 JANUARY 2024**  
RACES START FROM 11am

10km - Walk, Run or Mountain Bike

15km - Run or Mountain Bike

21km - Run or Mountain Bike

43km - Mountain Bike

E-bikes - recreational only

Register online at:  
[www.glenhamtrainwreck.co.nz](http://www.glenhamtrainwreck.co.nz)  
or on the day from 9.30am at  
**Glenham Hall**  
Cash only (No EFTPOS available)

 GLENHAM TRAINWRECK TRAIL



Compete in any of the Mountain Bike events  
and go in the draw to win a

**MOUNTAIN BIKE VALUED AT \$1500**

thanks to MLT and CrossRoad Cycles

Fundraiser for Glenham Community Centre

