

# Riverton Primary School

Phone 03 2348663 Cell 027 759 4548 TEXT only  
Email [office@rivertonschoolnz.net](mailto:office@rivertonschoolnz.net)



*OUR VISION – THROUGH OUR CORE VALUES AND FOCUSED TEACHING AND LEARNING PROGRAMMES, WE ARE COMMITTED TO BE THE BEST WE CAN BE IN OUR LEARNING, ATTITUDE AND BEHAVIOUR*

Website [www.riverton.school.nz](http://www.riverton.school.nz)  
Bank Account No. 06 0954 0032230 00  
Kidspace Supervisor 027 2348663

Newsletter No. 2 14 February 2024

Greetings, Haere Mai, Talofa, Namaste, Ni hao, Hoe gaat het, Kamusta

**Waitangi Day** was celebrated last Tuesday, I hope you all had a relaxing day with your families.

**Yr 5 Camp** meeting will be held this evening at 5pm in Rm 10. These meetings inform families and gives you the opportunity to ask any questions you have not had answered.

With the construction happening around the school there will be a few changes made to make sure everyone is safe at school. **We would like all pupils to enter and leave school through the front gate near the crossing.**

We had one of the best days on **ROX** last Friday to get our year underway. The group enjoyed the sea shore experience and even ventured into the ROX spa.

The children all were very happy to see the **Life Ed Bus** back at school. All the classes experienced quality time in the bus and learning subjects like 'Basic needs and body care', 'Body and brain', 'Emotional change and growth' & 'Healthy habits'.

This week we started our **Structured Literacy** rotations. What this means is we have groups of pupils working with a teacher who is teaching the Stage and Concept that meet the needs of the children. This gives the children opportunities to work harder to be extended and even progress to new groups, and caters for children requiring more assistance.

We had an awesome **powhiri** welcoming in all our new pupils, families and teachers. Our assembly followed the mihi whakatau. At the assembly on Friday staff received certificates for the PD they completed on our TOD. They are all qualified First Aiders and the teaching staff have completed phase one of the Restraint module.

**CARE Day** was well received by all the children and staff. We dress up and celebrate our values and why they are so important to us as a school and community.

There will be a new section coming to our newsletters called '**Our Boards Voice**'.

We have our school **Athletics Day** at the rugby grounds on **Tuesday 27th February**. Hope to see as many of you there and if you would like to help out please let your child's classroom teacher know.

**Dates:** Feb - 15 - Yr 5 Camp Mtg - 5 pm in Rm 10, 20 - Yr 4 Camp Mtg - Rm 8 - 5 pm  
21 - 23 - Yr 5 Camp, 23 - Rm 8 Assembly, 26 - Elgregoe Show - Values, 27 - RPS/Thornbury Athletics (Postponement is next fine day), 29 - 1 Yr 4 Camp, **March** - 6 - Yr 6 Camp Mtg 5 pm in Rm 9, 8 - WS Athletics, Rm 7 Assembly, 11 - Cohort Entry, 13 - 15 - Yr 6 Camp, 22 - Rm 10 Assembly, 24 - Southland Athletics,  
25 - 27 - RPS Swimming, 28 - WS Swimming, **29 - Good Friday, April** -1 - 2 - Easter Monday and Tuesday, 3 - 5 - RPS Swimming, 5 - Leadership Assembly, 8 - 11 - RPS Swimming, 12 - RPS Swim Gala, EOT.

Haere ra  
Tim Page

'The only people who are mad at you for speaking the truth are those people that are living a lie. Keep speaking the truth.' **D Washington**

# ASSEMBLY TIMETABLE

**Parents/extended families welcome**

**Friday 23<sup>rd</sup> February @ 2.00pm Room 8**

**Friday 8<sup>th</sup> March @ 2.00pm Room 7**

**Friday 22<sup>nd</sup> March @ 2.00pm Room 10**

**Friday 5<sup>th</sup> April @ 2.00pm Leadership assembly**

*All welcome*

## What's Happening

### February 2024

- ❖ 15<sup>th</sup> Feb Year 5 Camp Meeting 5pm in Room 10
- ❖ 20<sup>th</sup> Feb Year 4 Camp Meeting 5pm in Room 8
- ❖ 21<sup>st</sup> Feb Year 5 Camp - Queenstown
- ❖ 23<sup>rd</sup> Feb Year 5 Camp - Returns
- ❖ 26<sup>th</sup> Feb Elgregoe Show - Values
- ❖ 27<sup>th</sup> Feb RPS & Thornbury Athletics Day
- ❖ 29<sup>th</sup> Feb Year 4 Camp - Dunedin

### March 2024

- ❖ 1<sup>st</sup> Mar Year 4 Camp returns from Dunedin
- ❖ 6<sup>th</sup> Mar Year 6 Camp Meeting 5pm
- ❖ 8<sup>th</sup> Mar WS Athletics
- ❖ 11<sup>th</sup> Mar Cohort Entry
- ❖ 13<sup>th</sup> Mar Year 6 Camp - Pukerau
- ❖ 15<sup>th</sup> Mar Year 6 Camp returns from Pukerau
- ❖ 24<sup>th</sup> Mar Southland Athletics
- ❖ 25<sup>th</sup> Mar School Swimming

# CARE MUFTI DAY



## ROX'S



## ASSEMBLY



Curriculum Update from the syndicate co-ordinators



In our classrooms RPS students have started the year with a focus on

“My Body My Responsibility”

Our Big Idea: We are unique and we know about rights and responsibilities for looking after ourselves, including the importance of relaxation, hygiene, sleep, good nutrition, healthy lifestyles, being safe, knowing about our bones, vital organs, brain and more. Harold came to help cement the learning about our bodies. We have started learning our Pepeha.

We are starting Athletics Practices this week.

Mrs Ultee & Miss Carran

**INVERCARGILL MUSICAL THEATRE**  
presents

nickelodeon  
THE  
**SPONGEBOB**  
**MUSICAL**

**ON SALE  
NOW!**

imtinc

youth  
edition

**14 - 16 MARCH 2024**

**CIVIC THEATRE INVERCARGILL**

**TICKETEK**



# Supercharge Your Child's Capabilities with **MathsBuddy**

To speak to  
someone about  
MathsBuddy,  
call us at  
**0800 299 182**

MathsBuddy is here to help your child succeed and build maths confidence.

With over 1,400 video tutorials and 50,000 interactive questions and worksheets, MathsBuddy helps guide your children through their exam revision lesson by lesson.

Get started with a **free trial** today!



- Clear and concise step-by-step video lessons
- Interactive questions and worksheets to test understanding of topics
- Students receive immediate feedback on their answers, helping them to correct mistakes in real-time
- Available 24/7, giving students the flexibility to study when it's most convenient for them
- One-stop solution for students preparing for maths exams

Start your MathsBuddy FREE trial today at [www.mathsbuddy.co.nz](http://www.mathsbuddy.co.nz)

# RPS & THORNBURY ATHLETICS DAY

**Athletics is coming up!**  
The expectation is that ALL Riverton Primary School children will participate in this awesome day. We look forward to seeing everyone there, participating, having fun

## *The Music Shed*

### Music Tuition for 2024

This year sees us sadly negotiating for a new Drum tutor after losing Wayne Muntz last year. Wayne's input over the two years he tutored was very much appreciated by us all. As usual, we also have places open for Piano and Acoustic Guitar students with accompanying Theory. We also offer band, group work and performance as practicable, for all students who wish to participate.

Contact Jenni Bickley 0297708451 for further enquires.



**Make a life changing  
difference in your  
community**



Your community needs you!

### HATO HONE ST JOHN RIVERTON FIRST RESPONSE UNIT

The community of Riverton really needs your help. Currently we have only 3 volunteers to help with our ambulance response locally.

We have just acquired a First Response Unit that is able to respond to emergencies in our community for the initial help and care of patients until a transporting crew from outside our area can arrive.

Hato Hone St John offers full training to enable First Responders to care for patients. We offer an internationally recognised First Responder Qualification with NZQA endorsement.

Do you have an employer that would be willing to allow you to respond to a pager for an hour or so or do you have a few hours in the evening or overnight that you could turn a pager on and respond if someone needed your help?

If you are interested in helping your Community and Hato Hone St John, please call Kat Andrew Group Operations Manager Southland West on 027 291 5462 or Volunteer Support Manager Sandra Wilson on 027 232 8479.

This could be a life changing decision for you as well as your community.

### SOUTHLAND FOOTBALL RUN EVENT

Skills and games session free for all ages, no experience needed.

When: Thursday February 29<sup>th</sup> 2024

Time: 4-6pm

Place: Central Southland College, McKenzie St, Winton

## NUT BAN

**Nut allergies are dangerous for children who have major allergies. We have a student at school who has a severe nut allergy. Please exclude all nut products from your child's lunchbox.**

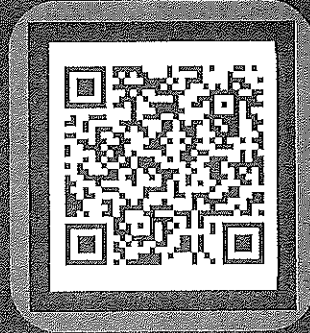
**Riverton Primary School**



# RIVERTON PRIMARY

## WE STILL HAVE SPACES AVAILABLE!

### FIRST BEAT KEYBOARD UKULELE GUITAR VOCALS

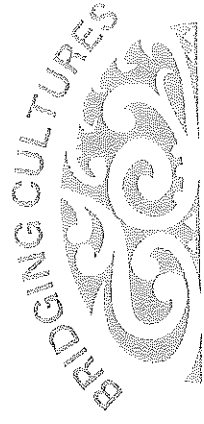


SCAN HERE!

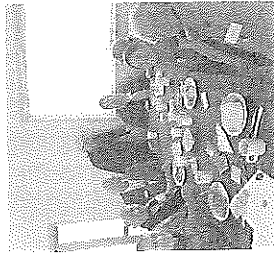
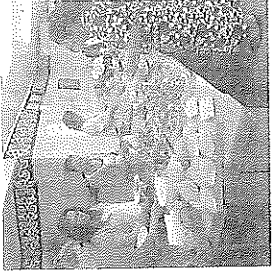
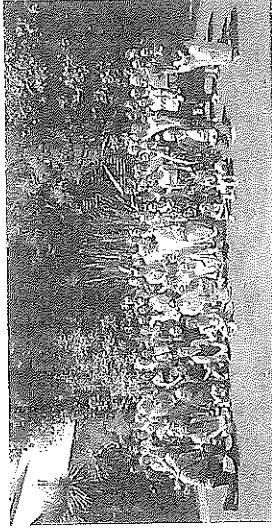
ENROL NOW

**KENNEDY SCHOOL OF MUSIC**  
25 Don St, Invercargill

More Information  
[info@ksom.nz](mailto:info@ksom.nz) 021 138 9799



Join us for Bridging Cultures, a nation-wide programme bridging connections between pasifika, ethnic communities, and mana whenua

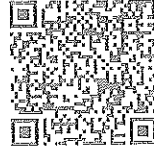


### Local Iwi History

Learn about the history of the local iwi/hāpū, as well as a presentation on Te Tiriti o Waitangi

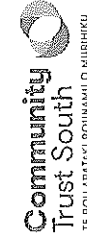
### Inter-cultural Connection

Facilitated workshops that create space to share and connect with other participants from your region.



sign up by scanning this QR Code

or contact us at [kiaora@inclusivetearedod.nz](mailto:kiaora@inclusivetearedod.nz)



9 AM - 3 PM

# 09

MARCH 2024

## MURIHIKU MARAE

INVERCARGILL

She  
Loves  
golf.



LOVE  GOLF.  
NZ

## SHE LOVES GOLF - LEARN 2 PLAY @ RIVERTON GOLF CLUB

Join us on Monday nights from March 11th for loads of laughter and learning at Riverton GC

Coach Simon Boland and the team will be on hand to share hot tips and skills that will get you ready to play on the golf course.

Location: Riverton Golf Club, 18 Carroll St Riverton

Monday Evenings March 11th - April 8th | Time: 5:30 pm - 7:00 pm

Cost \$10 includes all equipment and complimentary platters following the session.

Suitable for women of all ages and abilities looking to get into golf.

How to register: Just come along on the night or register below,

For more information contact: Simon: [simon.boland@golfnz.org](mailto:simon.boland@golfnz.org) or Phil: [phil.robinson@golfnz.org](mailto:phil.robinson@golfnz.org)

golf  
southland

IN PARTNERSHIP WITH

GOLF NZ  
KOROWHA AOTEAROA



Stay Up-to-date.  
Join the She Loves Golf  
Facebook Group